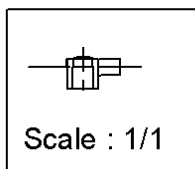
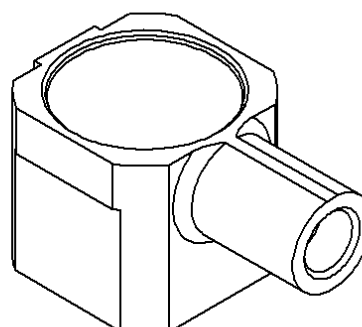
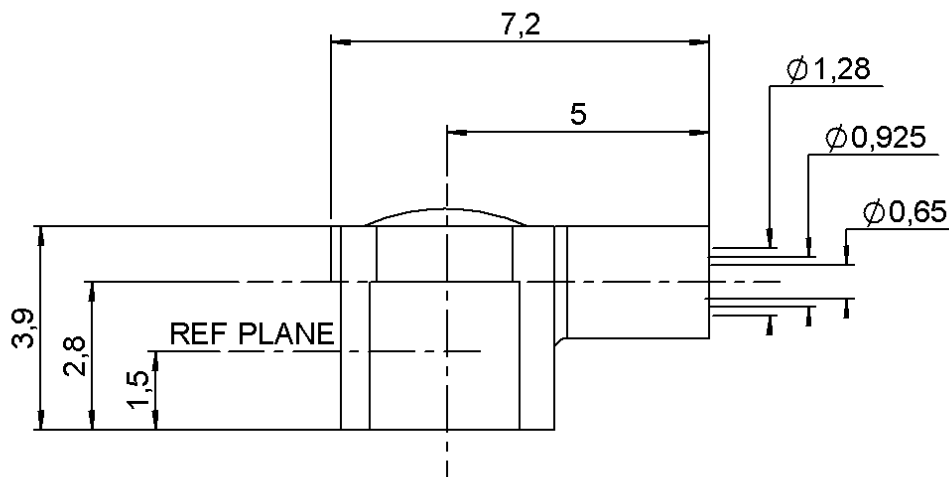


RIGHT ANGLE PLUG CRIMP TYPE

R209.351.020

CABLE 1/50 S-BR + 1/75 S-BR

Series : MMS



All dimensions are in mm.



COMPONENTS	MATERIALS	PLATING (µm)
BODY	ZINC ALLOY	NICKEL 2
CENTER CONTACT	BRASS	NICKEL 2
OUTER CONTACT	-	-
INSULATOR	PTFE	-
GASKET	-	-
OTHERS PARTS	-	-
-	-	-
-	-	-

Issue : 0704 F

In the effort to improve our products, we reserve the right to make changes judged to be necessary.



RIGHT ANGLE PLUG CRIMP TYPE

R209.351.020

CABLE 1/50 S-BR + 1/75 S-BR

Series : MMS

PACKAGING

Standard	Unit	Other
1000	'W' option	Contact us

SPECIFICATION

ELECTRICAL CHARACTERISTICS

Impedance		50 Ω
Frequency		0-6 GHz
VSWR	* +	0,0000 x F(GHz) Maxi
Insertion loss		0.2 √F(GHz) dB Maxi
RF leakage	- (NA - F(GHz)) dB Maxi
Voltage rating		50 Veff Maxi
Dielectric withstanding voltage		250 Veff mini
Insulation resistance		500 MΩ mini

CABLE ASSEMBLY

Stripping	a	b	c	d	e	f
mm	2,10	1,90	0,00	0,00	3,10	0,00

Assembly instruction :

Recommended cable(s)
50 VMTX
75 VMTX

Characteristics indicated on this data sheet are those that can be achieved with the highest performance cable. Intrinsic limitations of the cable may diminish the performance of the assembly

Cable retention

- pull off **15** N mini
- torque **NA** N.cm

MECHANICAL CHARACTERISTICS

Center contact retention		
Axial force – Mating end	8	N mini
Axial force – Opposite end	8	N mini
Torque	NA	N.cm mini

TOOLING

Part Number	Description	Hexagon
.	.	.

Recommended torque		
Mating	NA	N.cm
Panel nut	NA	N.cm
Clamp nut	NA	N.cm
A/F clamp nut	0,0000	mm

Mating life	50	Cycles mini
Weight	0,2850	g

OTHER CHARACTERISTICS

*50 Ohms:1.2 à 2GHz, 75 Ohms:1.14 à 1Ghz

ENVIRONMENTAL

Operating temperature	-40/+90	° C
Hermetic seal	NA	Atm.cm3/s
Panel leakage	NA	

Issue : 0704 F

In the effort to improve our products, we reserve the right to make changes judged to be necessary.



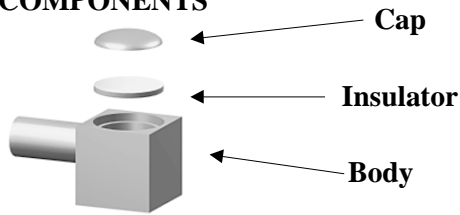
RIGHT ANGLE PLUG CRIMP TYPE

R209.351.020

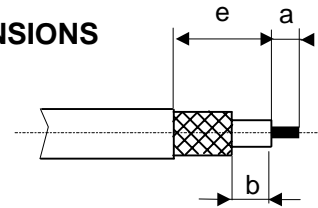
CABLE 1/50 S-BR + 1/75 S-BR

Series : MMS

COMPONENTS



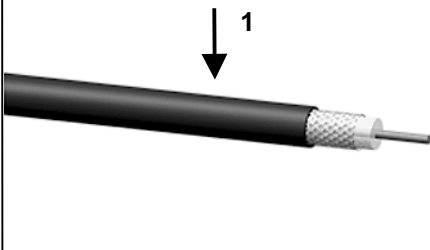
STRIPPING DIMENSIONS



« **Procédure interne. Seuls les connecteurs câblés par RADIALl sont garantis.** »
 « **Internal procedure. Only plugs assembled by RADIALl are under guarantee** »

1

Strip the cable.



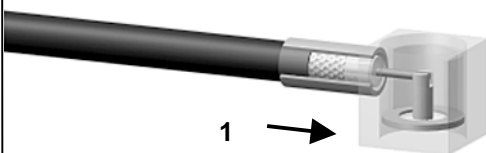
4

Solder the inner conductor.



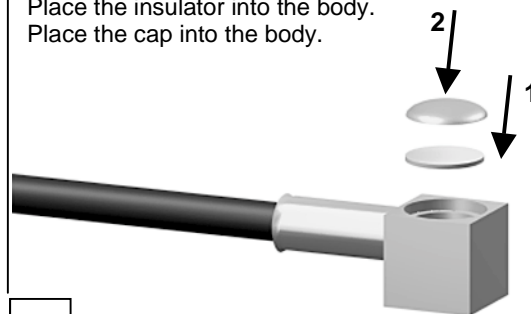
2

Introduce the cable into the body until contact with the body shoulder.



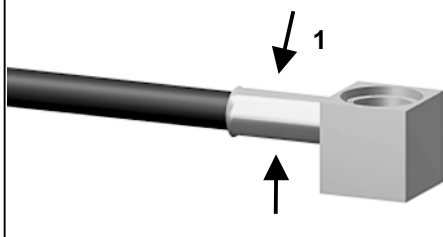
5

Place the insulator into the body.
Place the cap into the body.



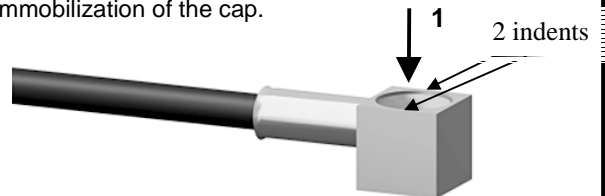
3

Crimp the body on the cable.



6

Press on the cap flush or slightly below the surface of the body assembly and make two indents to complete immobilization of the cap.



Issue : 0704 F

In the effort to improve our products, we reserve the right to make changes judged to be necessary.

